



ENDURONIC

ENDURANCE & ELEGANCE OPTIMISED



Perfecting the Art of Vertical Mobility



JOHNSON SNAPSHOTS

- ▲ Johnson Lifts are the pioneers in vertical transportation over 6 decades in India.
- ▲ Number one in sales volume since 2009.
- ▲ 300,000 square metres is the total area of our three lift factories with a combined manufacturing capacity of over 18,000+ units/ annum.
- ▲ We have fourteen lift models to suit every budget and need.
- ▲ Currently, we have over 1,00,000+ units under Annual Maintenance Contracts in India.
- ▲ Johnson is the only manufacturer of heavy duty escalators in India with a 20,000 square metre factory in Chennai.
- ▲ We offer a wide range of escalators and travelators to cater to the needs of every sector.
- ▲ We operate from 80+branches in India and 10+ offices overseas, with over 8,000+ Employees worldwide.

At 155 feet, one of the tallest lift testing towers in india at our Chennai factory.



STANDARD FEATURES

All Enduronic lifts come with the following features as standard:

Door Frame Enduronic Lifts come with door frames in Decorative Laminated Steel Sheet (DLSS) that gives strength as well as an elegant appearance.

Stainless Steel Buttons Sophisticated design-braille buttons flush with backplate. LED illumination. Highly tamper resistant.

Infra Red Screen Sensor Curtain of 212 infrared beams to prevent accidental closing of the door.

VVVF Controller This world leading technology comes standard in all Enduronic lifts.

The Variable Voltage Variable Frequency - VVVF control, ensures 50% energy savings. It also creates a super-comfortable ride quality with jerk free starts and stops. Smooth acceleration and deceleration and no landing variations, time after time. The control system in this is Simplex.

VVVF Door Controller Silken smooth door movement. Advanced features like adjustable independent times for opening and closing. Slow-nudging feature ideal for high traffic situations.

OPTIONAL FEATURES

Overload Indicator When the lift is overloaded, there is an audible "overload" announcement as well as a message in the display panel.

Intercom with Instrument Phone in the car cabin is connected to the phone in the lift lobby to facilitate communication during emergency situations.

Automatic Rescue Device - ARD

Automatically takes the lift to the nearest level in the case of a power interruption.



Diagrammatic representation of the curtain of 212 infra red beams that prevents accidental closing of the door.



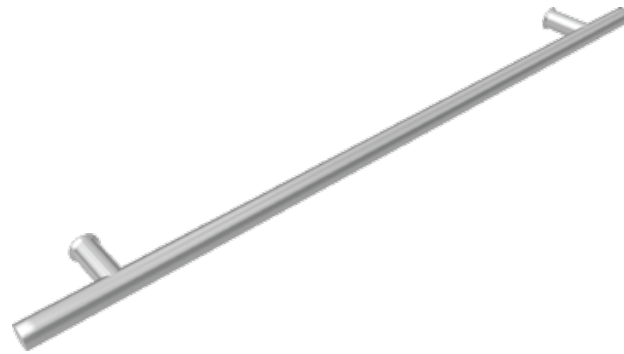
Stainless Steel interior in Hairline finish.



JLFC 15

Decorative ceiling with circular fan:

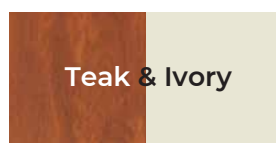
With power saving LED bulbs. Fan diffusers are available in Grey. Optional: Silent cross-flow fans.



Stainless Steel Handrail

Colour options

Corrosion - resistant, DLSS panels for car interiors. Available in the following combinations.



Narrow Door Jamb



Surface mount



JLLP 02

Grouting



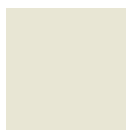
JLLP 06

DLSS Doors available in the following colours:

Orange



Ivory



Teak



Blue



Grey



JLCOP 01

Car Operating Panel (COP): In elegant No.4 Stainless Steel finish. With inset emergency lamp-alarm. Braille buttons with LED illumination. Highly tamper-resistant.



JLFL 01 PVC



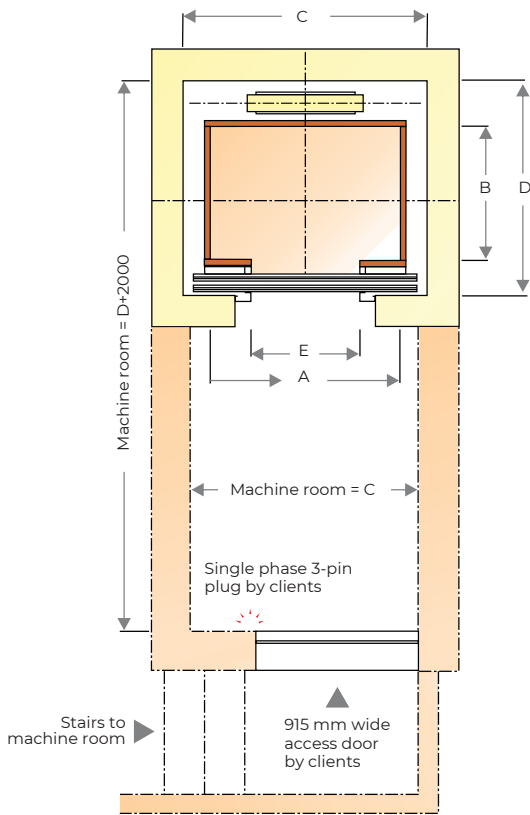
JLFL 02 CHEQUERED PLATE (OPTIONAL)



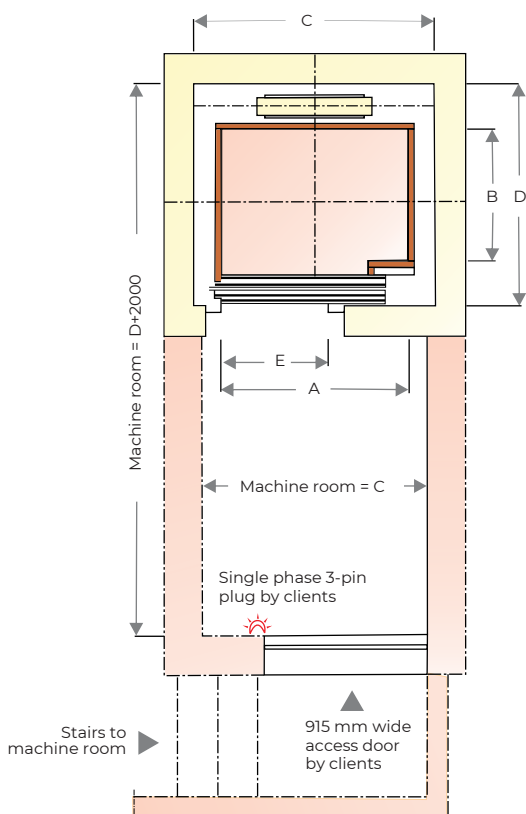
JLFL 03 PERGO - WOODEN (OPTIONAL)



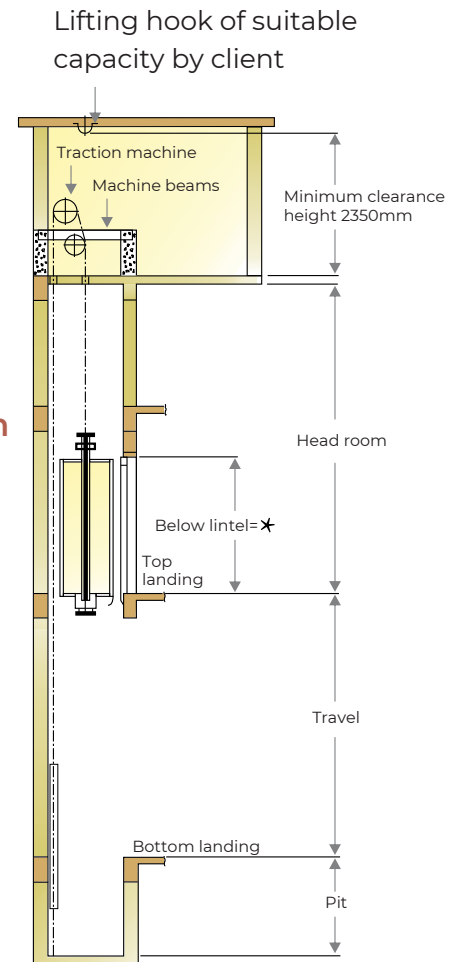
Centre - Opening Door Lift



Side - Opening Door Lift



Elevation



* Narrow door jamb, below lintel height is 2125.

Note

1. All dimensions are in millimetres.
2. All dimensions are for clear finished lift wells after plastering.
3. Dimensions of the machine room depends upon orientation and number of lifts shafts.
4. If access to machine room is by a steel ladder instead of a staircase, provide a trapdoor with lifting hook in the machine room.
5. Clear entrance heights of door openings at 2000 mm.
6. All walls minimum 150 RCC or 230 Brick (hoist way front wall 230 brick preferred).
7. RCC machine room structural floor slab 150 thick designed to sustain minimum 1000 kg/M2 UDL.
8. Power supply 400 volts, 3 phase, 4 wires, 50 Hz and 230 volts 1 phase terminating in a TPIC/DPIC switch to be provided by clients.

For specific requirements our local representative will be happy to work with you in preparation of working drawings.



Centre - Opening Door Lift

Load		Speed in m.p.s	Car Inside		Lift Well		Entrance	No of Stops / Travel
Persons	Kgs		A	B	C	D	E	
6	408	0.63	1100	1000	1550	1550	700	7 Stop / 18 Meters
			1000	1100	1550	1650	700	
			1200	900	1750	1450	800	
8	544	0.63	1400	1000	1800	1550	800	
			1300	1100	1800	1650	800	
			1200	1200	1750	1750	800	
10	680	0.63	1400	1250	1800	1800	800	6 Stop / 15 Meters
13	884	0.5	2000	1100	2500	1750	900	
16	1088	0.5	2000	1300	2500	1950	1000	

Side Opening telescopic door lifts

Load		Speed in m.p.s	Car Inside		Lift Well		Entrance	No of Stops / Travel
Persons	Kgs		A	B	C	D	E	
6	408	0.63	1100	1000	1500	1650	800	7 Stop / 18 Meters
			1000	1100	1500	1750	800	
			1200	900	1600	1550	800	
8	544	0.63	1400	1000	1800	1650	800	
			1300	1100	1700	1750	800	
			1200	1200	1600	1850	800	
10	680	0.63	1400	1250	1800	1900	800	6 Stop / 15 Meters
13	884	0.5	2000	1100	2500	1800	1000	
16	1088	0.5	2000	1300	2500	2000	1000	

All dimensions in millimetres.

6p to 10p of 0.63mps speed: Pit-1350, Head Room-4100 (If over load device feature provided, Head room height 4200mm required)

13p to 16p of 0.5mps speed: Pit-1350, Head Room-4350

SCAN FOR UPDATED SPEC



Specifications are subject to change without prior notice.
Photographs, colour swatches and finishes featured are indicative.

OVERSEAS

Nepal, Sri Lanka, Tanzania,
UAE, Uganda, Bhutan, Qatar,
Maldives, Saudi Arabia,
Oman, Bahrain

NORTH

Chandigarh, Gurgaon,
Delhi, Jaipur, Jammu,
Lucknow, Noida

EAST

Bhubaneswar, Guwahati,
Kolkata, Patna, Ranchi



CENTRAL

Amaravati, Bhopal,
Indore, Jabalpur, Nagpur,
Nashik, Raipur

WEST

Ahmedabad, Goa, Kolhapur,
Mumbai Andheri, Mumbai Mahpe,
Pune, Solapur, Surat, Vadodara

SOUTH

Bengaluru, Chidambaram, Calicut,
Chennai, Cochin, Coimbatore, Hyderabad,
Hubli, Hosur, Madurai, Mangalore, Mysore,
Puducherry, Salem, Tirunelveli, Tirupathi,
Trichy, Trivandrum, Vijayawada, Vellore,
Vishakapatnam, Warangal

4 Factories | 80+ Branches in India | 10+ Offices Overseas | 8,000+ Employees



Scan to visit our website



ENDU|MKTG|08|QR|06-DT: 02|2025

Johnson Lifts Private Limited

Corporate Office: 1, East Main Road, Anna Nagar Western Extn., Chennai 101
+91-44-43152200 | enquiry@johnsonliftsltd.com | www.johnsonliftsltd.com