



Perfecting the Art of Vertical Mobility

Freedom of expression!



Mini Sukranti

MEDIUM RISE



Johnson Snapshots

- ▲ Johnson Lifts are the pioneers in vertical transportation over 6 decades in India.
- ▲ Number one in sales volume since 2009.
- ▲ 300,000 square metres is the total area of our three lift factories with a combined manufacturing capacity of over 18,000+ units/ annum.
- ▲ We have fourteen lift models to suit every budget and need.
- ▲ Currently, we have over 1,00,000+ units under Annual Maintenance Contracts in India.
- ▲ Johnson manufactures heavy duty escalators in a 20,000 square metre factory in Chennai.
- ▲ We offer a wide range of escalators and travelators to cater to the needs of every sector.
- ▲ We operate from 80+ branches in India and 10+ offices overseas, with over 9,000+ Employees worldwide.

At 155 feet, one of the tallest lift testing towers in India at our Chennai factory.





Breakthrough advantages!

Mini Sukranti is the next generation in vertical transportation. The heart of it is a rare earth permanent magnet synchronous motor.

Save energy

When compared to geared machines - Mini Sukranti's reduces your power consumption by 60%. The gearless motor increases efficiency around 80% by:

- Reducing start up current
- Saving electricity - the busier the lift, the more the saving as a result of high efficiency.
- Less heat generation and greater mechanical efficiency of motor as it runs at a lower rpm.

Save the environment

Mini Sukranti is a green lift for greener buildings. The gearless motor requires no lubrication and zero maintenance. No oil means no pollution.

Smoother ride

The speed control works with closed loop feedback from the encoder to ensure safe and very smooth travel.

Save in the future

Mini Sukranti's gearless motor has only one moving part and the bearing completely sealed. It generates higher lift travelling speeds at much lower motor speed. All this adds up to trouble-free, smooth operation for decades to come.

Save space

Mini Sukranti is designed to modular specifications that saves valuable space in the liftwell. This means cost savings for you as well as more marketable floor space.

Superior on all counts

	Geared Machine	PMSM Gearless Machine
Nominal rotate speed (rpm)	1305	167
Motor capacity (kw)	19	11.5
Nominal current (amps)	40	26
Oil consumption (ltr)	15	0
Weight of the machine (Kgs)	1200	320



Interiors Car body, car door in corrosion-resistant, Decorative Laminated Steel Sheet (DLSS). The sleek false ceiling in DLSS comes with power saving LED lights. The car operating panel is in elegant Slimline SS finish. An SS hand rail is provided at the rear end of the car. Car body panels come in fixed sizes based on passenger capacity. Optional 20 mm recess can be provided for flooring by client.



Rosewood & linen

Cedar





*Anthracite Grey
& Hairline*

*White Etched
& Hairline*





Narrow Door Jamb



Door and door frames also available in Decorative Laminated Steel Sheet (DLSS) The landing fixture is with white seven segment LED display and hall position indicator



Fixtures

COP



JLCP01
Flushmount

Buttons



JLBT01
Round

JLCP02
Full COP - Flushmount
(Projected 8mm)

False Ceiling



JLFC03
Sleek Small Circular /
Square Diffuser (Optional)



JLFC08
Sleek Small Circular
Cross Flow Fan (Optional)

Finish : Single finish only possible for all of the above as per car panel finish

Hall Lantern



JLHL01 Standard
Horizontal

Flooring



JLFL01
PVC



JLFL03
Pergo (Optional)

LOP



JLLP23
Surfacemount

Display



JLDP02
Seven Segment
(White)

Handrail



JLHR01
Round Shape



JLHR02
Square Shape

*COP: JLCP 01 Can be utilized for up to 14 stops.

*JLCP 01: Not Suitable For Physically Challenged Requirements.

*Orange square dot matrix display is optional



Features

Mini Sukranti Medium Rise enviable features in a nutshell

- ▶ Machine roomless, compact controller fitted in the lift shaft
- ▶ Max. travel speed of 1.25 mps
- ▶ Upto 45 metres travel height (16 floors)
- ▶ Max. load of 1020 kg

Door Frame Only Johnson Lifts come with elegant door frames in Decorative Laminated Steel Sheet (DLSS) that gives strength as well as an elegant appearance.

VVVF Controller The Variable Voltage Variable Frequency (VVVF) control, ensures 50% energy savings. It also creates comfortable ride quality with jerk-free starts and stops; Smooth acceleration and deceleration, and no landing variations, time after time. In the long run, this prevents wear and tear of components, which means less downtime and huge savings on spares

Stainless Steel Buttons Sophisticated design -buttons flush with backplate. White LED illumination. Tamper resistant Etched numbers. Braille markings.

Fireman Switch To enable fire-service personnel to take over complete control over one or more lifts.

VVVF Door Controller Silken smooth door movement. Advanced features like adjustable independent times for opening and closing. Slow-nudging feature ideal for high traffic situations.

Infra Red Screen Sensor Curtain of 212 infra red beams to prevent accidental closing of the door.

Full Height Car Fixture (Optional) Designed specially for tall buildings. With Press & Speak facility and overload indicator. Floor designation will be in numeric only. Position of this depends on passenger capacity.

Arrival Chime A ringing tone is sounded as the lift stops at the landing (For duplex only).

Overload Indicator When the lift is overloaded, indicator light turns on and the alarm beeps.

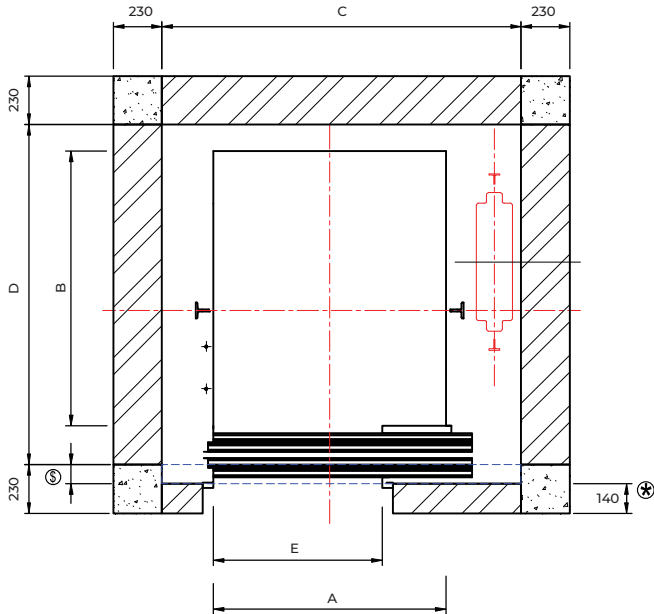
In-built Automatic Rescue Device - ARD Automatically takes the lift to the nearest level in the case of a power interruption.

Hi-tech Controller Enables Direct Landing the lift slows down and stops in a single motion without 'creeping' the last few centimetres. The elimination of 'creep speed' saves power. High speed is maintained for a longer period per round trip thereby saving time.

Diagrams

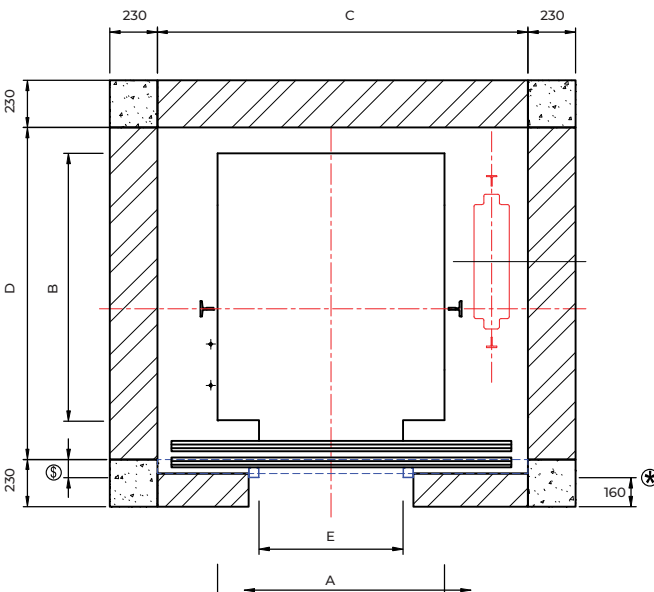


Plan of liftwell - 2 panel side opening door lift



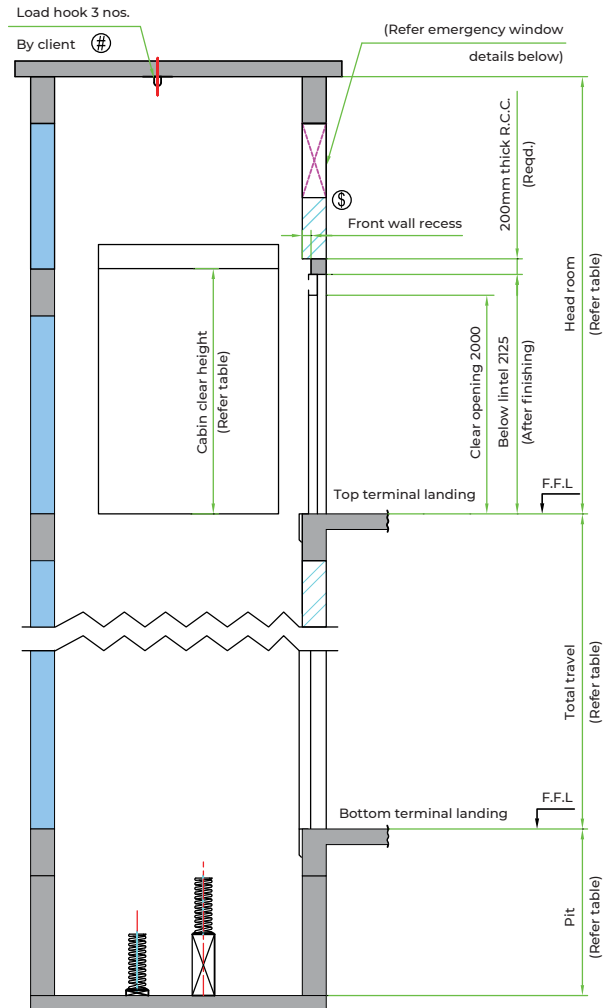
- ⊗ Front entrance wall thickness 140mm required
- Ⓢ Front wall recess 90mm to be required
Additional 90mm depth required for steel structural shaft

Plan of liftwell - 2 panel center opening door lift

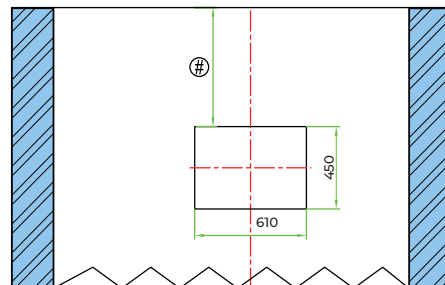


- ⊗ Front entrance wall thickness 160mm required
- Ⓢ Front wall recess 70mm to be required
Additional 70mm depth required for steel structural shaft
- ⊗ Front wall recess not required

Elevation



Ventilation window cutout detail (At accessible wall)



R.C.C. beams required in headroom in side walls - will be confirmed in GAD

R.C.C. not applicable for 6 & 10 passengers, red brick or solid block 230mm thickness required

R.C.C. not applicable for the steel structural shaft

Ⓢ and all of the above will be confirmed in GAD



Specifications

Civil dimensions for Mini Sukranti Centre Opening Door Lifts

Load		Car Inside		Lift Well		Entrance (W)
Persons	Kgs	A	B	C	D	E
6	408	1000	1100	1650	1475 [®]	700
		1000	1100	1750	1475 [®]	800
8	544	1050	1350	1675	1600	700
		1000	1400	1800	1800 [®]	800
		1200	1200	1800	1600 [®]	800
		1300	1100	1885	1500 [®]	800
10	680	1200	1450	1900	1775	800
		1000	1700	1800	1925	800
13	884	1100	2000	1950	2300	900
		1500	1450	2175	1800 [®]	900
15	1020	1100	2150	1950	2450	900
		1550	1550	2200	1875	900

Civil dimensions for Mini Sukranti Side Opening Door Lifts

Load		Car Inside		Lift Well		Entrance (W)
Persons	Kgs	A	B	C	D	E
6	408	900	1100	1500	1475	700
		1000	1100	1575	1475	800
8	544	1050	1350	1650	1600	800
		1300	1100	1885	1500 [®]	800
10	680	1100	1600	1775	1925	800
		1200	1450	1875	1775	800
13	884	1100	2000	1775	2300	900
		1500	1450	2175	1800	900
15	1020	1100	2150	1775	2450	900
		1550	1550	2200	1875	1000

Capacity	Pit depth	Head room	Speed	Travel	Cabin clear height
6P to 10P	1600	4000	1.25mps	45 mtrs	2200
13P & 15P	1700	4200			

*Glass doors necessitate an additional 200mm of headroom height required

*For vision panel door (optional)

[®]Front wall recess not required

Note: All dimensions are in millimetres. All dimensions are clear finished liftwells after plastering. Dimensions are suitable for lifts speed upto 1.25 m/s. Lifting hook in head room area required. All walls minimum 150RCC or 230 brick. RCC head room structural slab 150 thick designed to sustain minimum 1000 kg/m2 UDL. For Specific requirements our local representative will be happy to work with you in preparation of the drawings.

SCAN FOR UPDATED SPEC





OUR UNMATCHED MANUFACTURING CAPABILITY



Johnson escalator factory complex in Oragadam, Chennai



Johnson lifts factory, Nagpur



Johnson lifts factory in Poonamallee, Chennai



Johnson lifts factory complex in Sengadu, Chennai

OVERSEAS

Nepal, Srilanka, Tanzania,
UAE, Uganda, Bhutan, Qatar,
Maldives, Saudi Arabia,
Oman, Bahrain

NORTH

Chandigarh, Gurgaon,
Delhi, Jaipur, Jammu,
Lucknow, Noida

EAST

Bhubaneswar, Guwahati,
Kolkata, Patna, Ranchi



CENTRAL

Amaravati, Bhopal,
Indore, Jabalpur, Nagpur,
Nashik, Raipur

WEST

Ahmedabad, Goa, Kolhapur,
Mumbai Andheri, Mumbai Mahpe,
Pune, Solapur, Surat, Vadodara

SOUTH

Bengaluru, Calicut, Chennai, Cochin,
Coimbatore, Hyderabad, Hubli, Hosur,
Madurai, Mangalore, Mysore, Puducherry,
Salem, Tirunelveli, Tirupathi, Tiruvannamalai,
Trichy, Trivandrum, Vijayawada, Vellore,
Vishakapatnam, Warangal

4 Factories | 80+ Branches in India | 10+ Offices Overseas | 9,000+ Employees



Scan to visit our website



MSMR|KTC|08|QR|06-DT.03|25

Johnson Lifts Private Limited

Corporate Office: 1, East Main Road, Anna Nagar Western Extn., Chennai 101
+91-44-43152200 | enquiry@johnsonliftsltd.com | www.johnsonliftsltd.com